

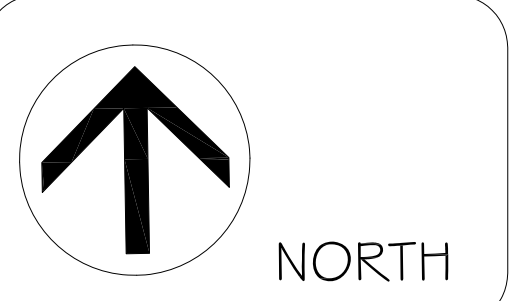


**RED BARN DESIGN**  
 2056 rasmussen road  
 park city, ut 84098  
 phone: (435) 649-6434  
 fax: (435) 649-5856

**MILNER RESIDENCE**  
 2383 LAKE VIEW COURT, PARK CITY, UTAH  
**SITE PLAN**

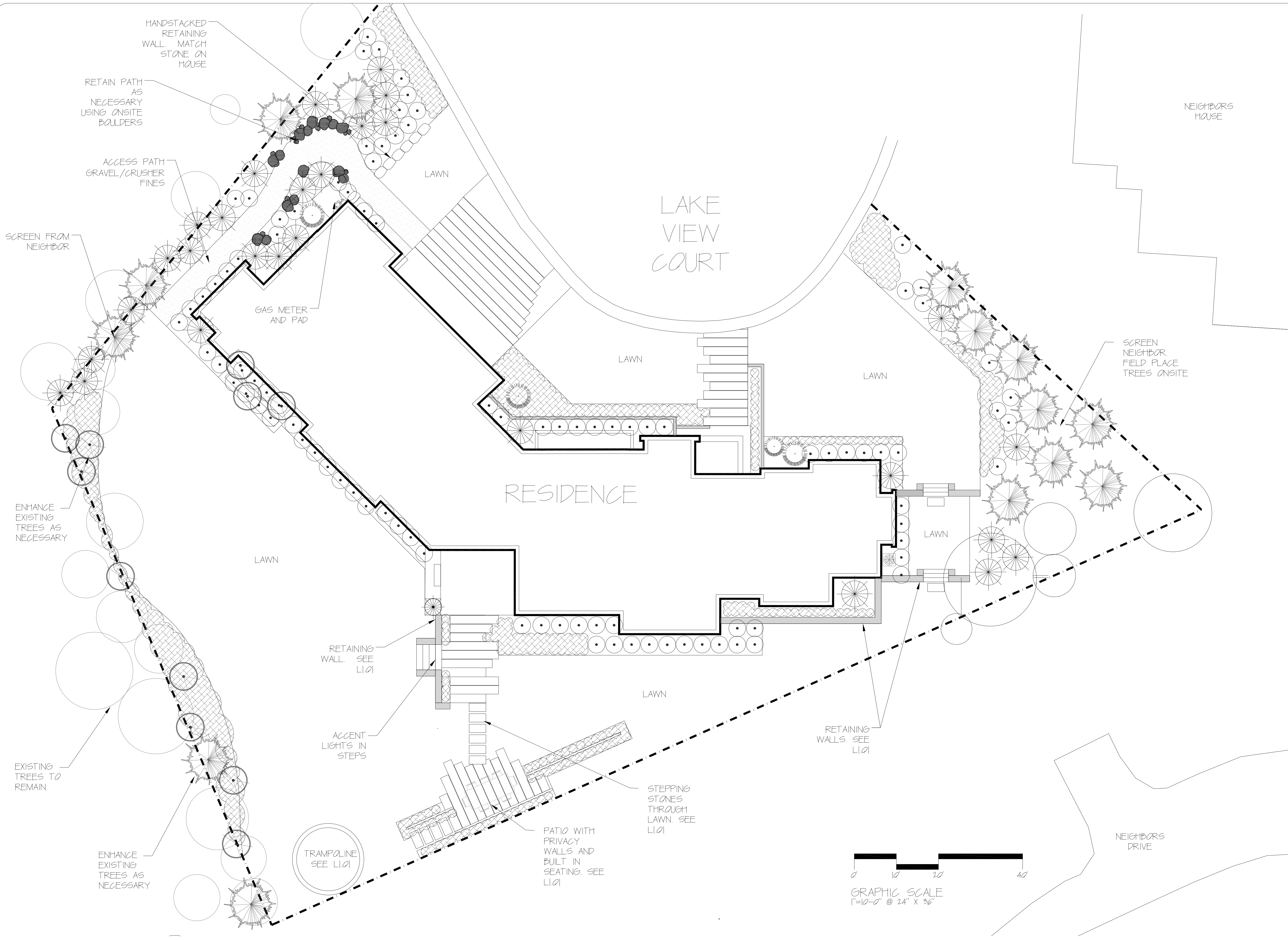


Scale: 1" = 10'-0"  
 Date: 06.23.2015  
 Drawn By: AY  
 Approved By: MC



no.	revisions	date	by
△	PER MEETING ON 7/15	8/1/15	AY
△	PER MEETING ON 8/25	8/11/15	AY
△			
△			

Sheet:  
**LI.00**



THE DRAWINGS, DESIGNS, IDEAS, ARRANGEMENTS, AND PLANS INDICATED OR REPRESENTED ARE THE SOLE PROPERTY OF RED BARN TREES INC., AND ARE SUBJECT TO THE COPYRIGHT OF RED BARN TREES INC., OR ITS ASSIGNS ANY USE OF THE DRAWINGS, DESIGNS, MATERIALS, OR INFORMATION CONTAINED HEREIN, INCLUDING BUT NOT LIMITED TO INSTALLATION, COPYING OR REPRODUCTION, WHICH IS NOT EXPRESSLY AUTHORIZED BY RED BARN TREES INC., IS STRICTLY PROHIBITED AS AN INFRINGEMENT OF ITS COPYRIGHT AND MAY RESULT IN LIABILITY.